

Basin Faucet 8779-90-81CP

INTRODUCTION:

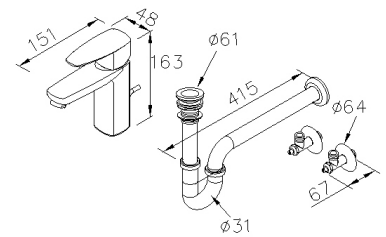
Design Team created the Pan 2 Faucets with concise style, and integrated rectangular and circular lines into the shape design to fit for different basins easily and provide users various choices. Though it has just used the most basic geometric elements, the design team also varied the faucets to be special and bring the positive benefit for bathroom.

"Pan-," a combining form meaning "all." We are eager to hope all users would have chances to experience our high-quality products, and it could start from this Pan Series which has perfect harmony with various basins and bathroom designs.



DESCRIPTION:

- 1.Chrome plated finish meets the standard of ASTM-SC2.
- 2.Anti-erosion coating lets it keep clean easily.
- 3.Material of handle meets JIS 3771 standard.
- 4.Hose with SANTOPRENE tube (meets NSF approval), can be stood 10Kg/cm2 water pressure and 120°C heat.



unit:mm

Certification:

Fixing Kits:

- 1.Mounting Bolt*1
- Rubber Washer*1
- Nut*1
- Bracket*1

AWARD: